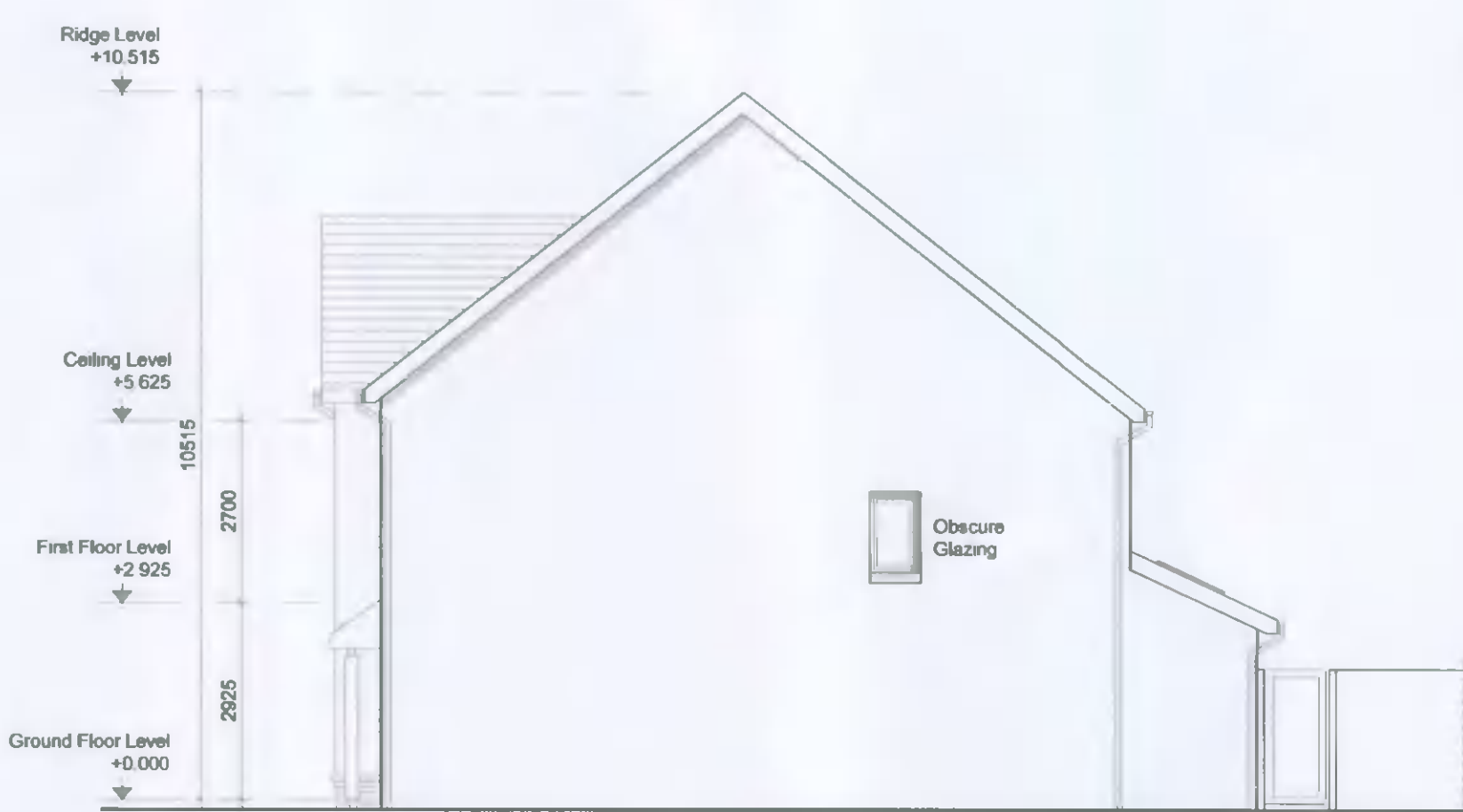




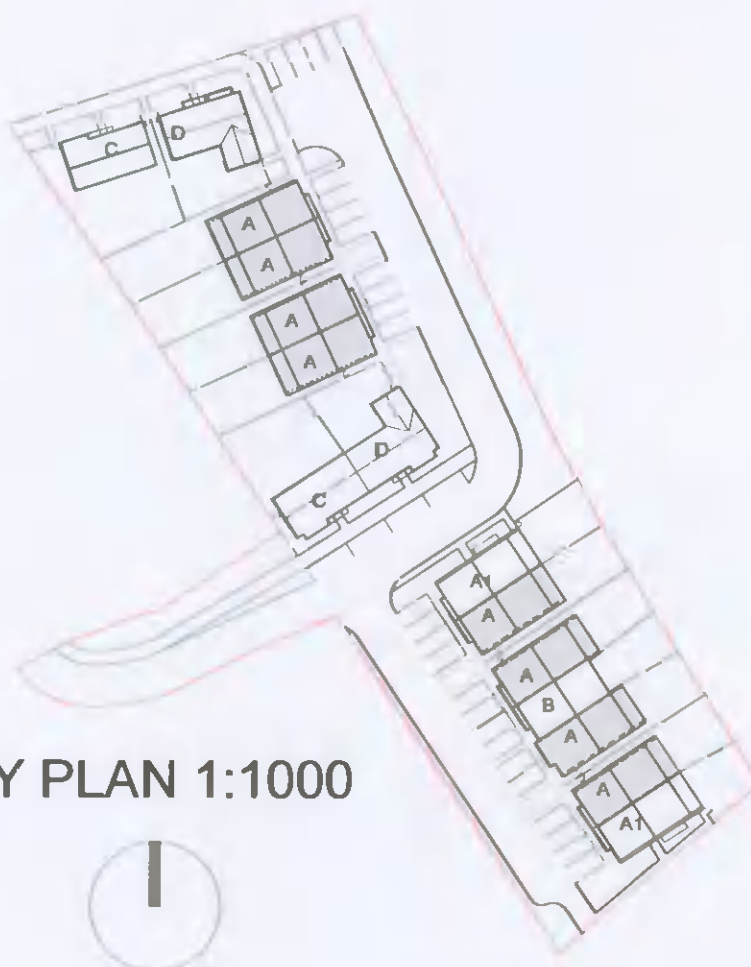
FRONT ELEVATION



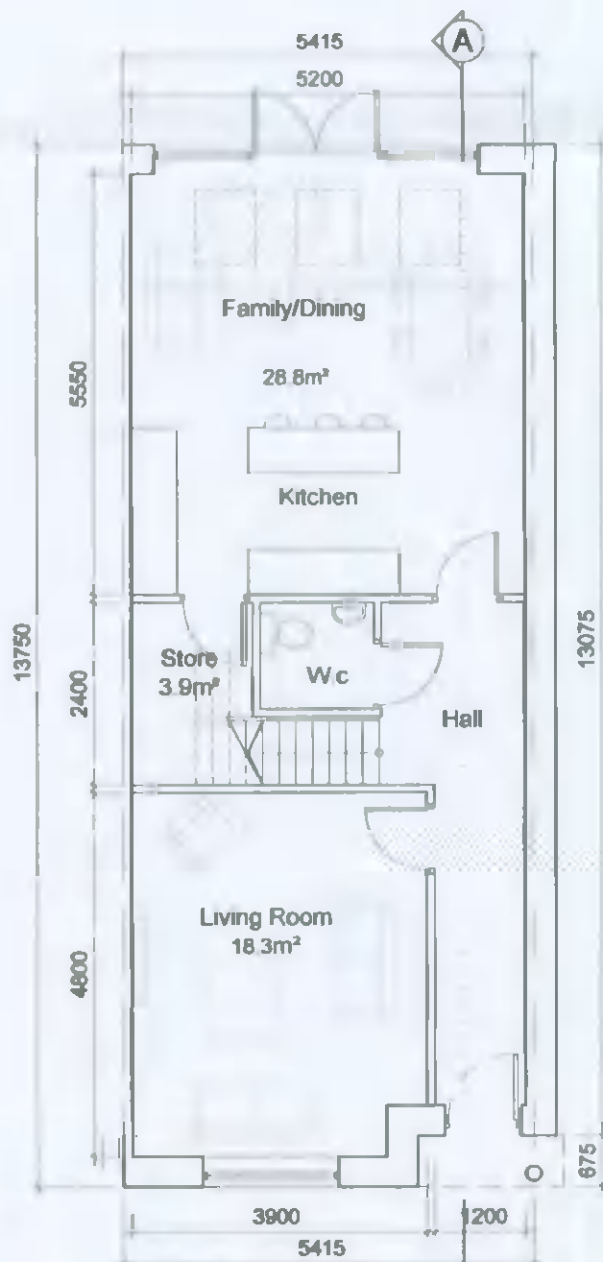
REAR ELEVATION



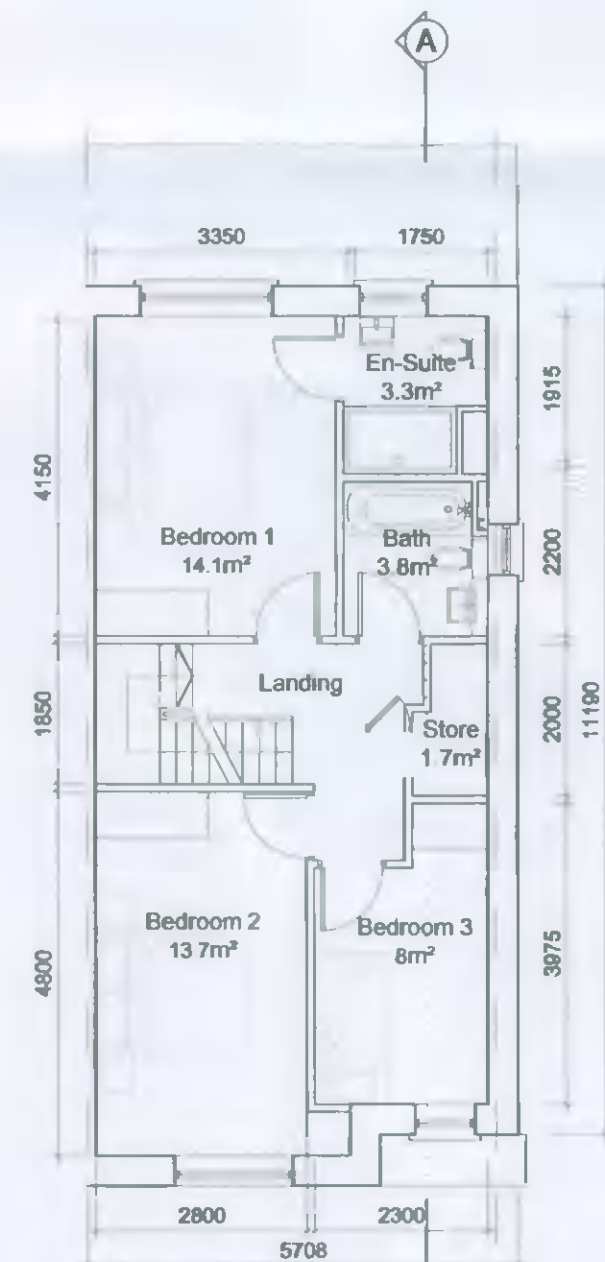
SIDE ELEVATION



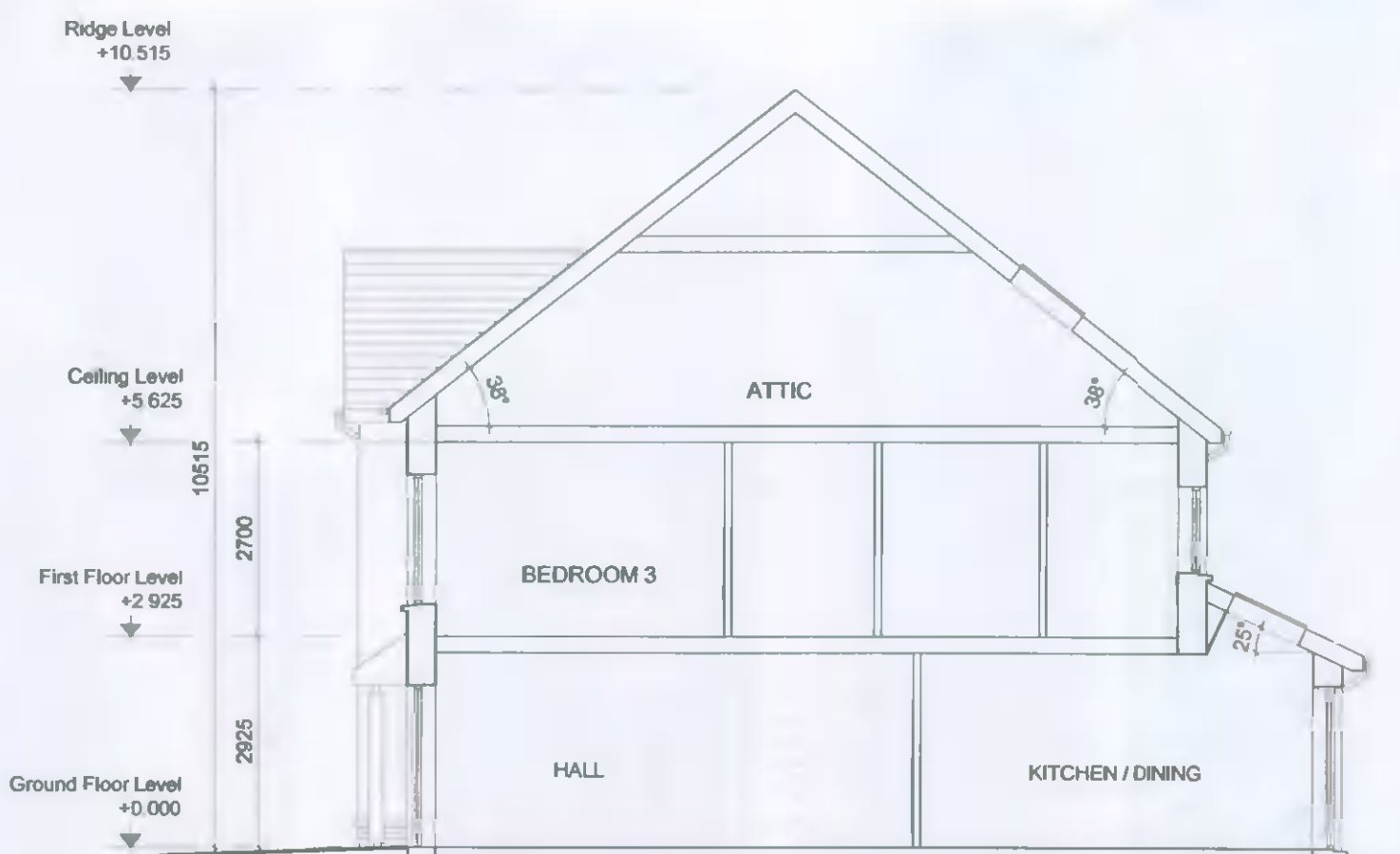
KEY PLAN 1:1000



GROUND FLOOR PLAN  
area 66.1 m² / 711.4 ft²



FIRST FLOOR PLAN  
area 56.3 m² / 606 ft²



SECTION A-A

GENERAL NOTES

THIS DRAWING TO BE READ IN CONJUNCTION WITH ARCHITECT'S DRAWINGS, CONSULTANT ENGINEER'S DRAWINGS AND SPECIFICATIONS & LANDSCAPE ARCHITECT'S DRAWINGS  
REFER TO ARCHITECT'S SITE PLAN PL02 FOR NORTH ORIENTATION.  
LEVELS GIVEN ON HOUSE TYPE DRAWINGS ARE GIVEN TO A LOCAL ABSOLUTE ZERO LEVEL. FOR SPECIFIC LEVELS DEPENDING ON INDIVIDUAL UNIT LOCATION, REFER TO ARCHITECT'S CONTEXT SECTIONS AND ENGINEER'S DRAWINGS WHERE LEVELS ARE ALL GIVEN IN RELATION TO LANDSURVEYOR'S BENCHMARK BASED ON MALIN HEAD DATUM LEVEL.

NOTES ON FINISHES:

- ROOF: TO BE FINISHED IN SLATE OR CONCRETE ROOF TILES IN SELECTED COLOUR OR SIMILAR APPROVED.
- WALLS: TO BE FINISHED IN PAINTED SAND / CEMENT RENDER WITH SELECTED BRICKWORK AS INDICATED.
- JOINERY: ALL WINDOWS AND DOORS, FRAMES AND LEAVES, TO BE TIMBER, FINISHED AND SEALED TO SPECIFICATION, OR ALUMINIUM POWDER-COATED TO APPROVED COLOUR OR uPVC TO APPROVED COLOUR. OBSCURE GLAZING WHERE INDICATED TO SENSITIVE WINDOWS.
- RAINWATER GOODS: GUTTERS, DOWNPIPES, AND FIXINGS TO BE uPVC OR ALUMINIUM POWDER COATED TO SELECTED COLOUR TO MATCH ROOF SLATES.
- SOLAR PANELS: \* INDICATIVE SOLAR PANEL POSITION, FINAL SOLAR PANEL POSITION DEPENDS ON HOUSE ORIENTATION. THE SOLAR PANELS SHOWN ARE A PROVISIONAL OPTION TO SATISFY RENEWABLE ENERGY REQUIREMENTS OF BUILDING REGS PART L. SOLAR PANELS MAY BE OMITTED IN FAVOUR OF ALTERNATIVE RENEWABLE ENERGY SOURCE.

A

2 STOREY  
3 BED

END TERRACE / SEMI DETACHED  
122.4 m² / 1317.5 ft²  
NO ON SITE: 8

NOTES:

DO NOT SCALE FROM DRAWINGS. WORK TO FIGURED DIMENSIONS ONLY. ARCHITECT TO BE NOTIFIED OF ALL DISCREPANCIES.

REVISIONS		
DATE	DESCRIPTION	No.



PROJECT TITLE <b>KINGSWOOD</b>	DATE MAY'17	DRAWN BY UOR
DRAWING TITLE House Type A Plans, Elevations & Section	SCALE 1:100	REVISION 
Albert Place West, Harcourt Lane, Dublin 2, Ireland. Tel: 01-47887000 Fax: 01-47867111 E-Mail: arch@mcm.com	SCH NO 17008	DRAWING NO PL03